



KOOTENAI COUNTY
invites applications for the position of:

Transit Fleet Maintenance Manager - RMO

DEPARTMENT: Resource Management Office

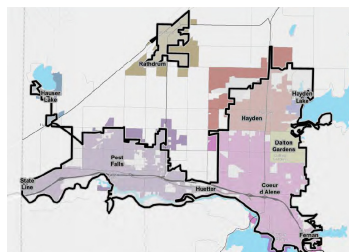
SALARY: \$41,042.00 - \$46,870.00 Annually

**OPENING
DATE:** 04/26/19

**CLOSING
DATE:** Continuous

SUMMARY:

TRANSIT FLEET MAINTENANCE MANAGER



****APPLY ONLINE AT www.kcgov.us/departments/personnel/jobs/ AND ATTACH RESUME, LETTERS OF REFERENCE & COPIES OF CERTIFICATIONS****

THIS POSITION works as a working manager, supervising and maintaining operations and functions of Kootenai County's public transportation fleet. This position oversees/performs a variety of mechanical, electrical, and technical maintenance duties on motor buses, cutaways, vans, and other equipment, performing skilled and semi-skilled duties related to the maintenance of the fleet.

- \$41,042 to \$46,870 per year depending on experience
- Public Employees Retirement System of Idaho (PERSI), a pension plan with five year vesting, **11.32% employer contribution**, and a lifetime payout upon retirement
- Excellent and comprehensive benefits package. For example, employee-only medical/dental/vision premium of only \$47.00 per month (*tobacco free rate*). View our entire [benefits package](#).
- [Public Student Loan Forgiveness Program](#)

View the full [job description](#)

Please view **the Transit website:** <https://www.kcgov.us/486/Transit-Services>

THE RIGHT PERSON FOR THIS POSITION WILL . . .

- Have a Commercial Driver's License (CDL) in order to drive vehicles to and from various maintenance locations
- Have experience supervising contractors
- Enjoy working closely with the community and providing excellent service
- Be able to organize and manage multiple priorities to maximize efficiency and meet critical deadlines

DO YOU QUALIFY?

- Do you have a degree in automotive technology or related field?
- Do you have ten (10) years of related experience servicing and repairing vehicles and equipment or equivalent experience working with mechanics or heavy equipment?
- Are you able to complete repair work as needed and provide your own tools?
- Do you possess or have the ability to possess a driver's license and are you insurable?

CONTACT US:**Resource Management Office (208) 446-1616**jbieze@kcgov.us**Human Resources (208) 446-1640**kchr@kcgov.us

OUR LOCATION: Located in beautiful northern Idaho, and home to approximately 150,000 residents, Kootenai County is surrounded by scenic mountains and more than twenty pristine lakes--an outdoor enthusiast's dream. The largest city and county seat is located in Coeur d'Alene and is on the majestic shores of Lake Coeur d'Alene. With a low crime rate and cost of living that is below the national average and significantly less than in larger cities, it is an ideal place to call home. [Click here](#) to learn more about living in Kootenai County.

TO APPLY: Apply online at www.kcgov.us . Be sure to attach a resume, letters of reference and copies of certifications to your online application. A pre-employment and subsequent drug test is required for all positions.
EOE/Vets Preference/Drug Free Workplace

APPLICATIONS MAY BE FILED ONLINE AT:
<http://www.kcgov.us/departments/personnel/jobs/>

Position #2019-00036
TRANSIT FLEET MAINTENANCE MANAGER - RMO
CK

451 N Government Way
PO Box 9000
Coeur d'Alene, ID 83816
(208) 446-1640

kchr@kcgov.us

Transit Fleet Maintenance Manager - RMO Supplemental Questionnaire

* 1.

For this application, we require a resume, letters of reference and copies of certifications. Please verify that you have attached a resume, letters of reference and copies of certifications prior to submitting this application.

Yes No

* 2. If you are a veteran, did you attach a copy of your DD214?

Yes No

* Required Question